



Society of Women Engineers SPACE COAST SECTION NEWSLETTER

Vol. 7 No. 1

P. O. Box 1297 Cape Canaveral, Florida 32920

September 2002

Visit our website at <http://www.spacecoast.net/spacecoast/swe>

From the President:



To all my fellow SWE colleagues and new member prospects,

It is great to begin a new SWE year with such a wonderful group of colleagues. I hope you all had a relaxing and enjoyable summer. I heard the Turtle Walk was a fantastic experience in July. We are looking forward to a well-rounded, fun, beneficial year with SWE. We will be offering a wide variety of activities, hoping to meet the needs of all our members. Your executive council has been busy over the month of July, planning our calendar. Each of you should take a look at our proposed calendar, mark your calendar for meeting dates and provide us feedback on anything else you would like to see SWE sponsor this year. One of the things not on the calendar yet, but in discussion is the possibility of hosting a series of luncheons, at different work locations, with different members of senior management, enabling our members to gain insight into "climbing the corporate ladder". Let us hear from you on what would make SWE a good choice for you, as it has become for me.

As a full-time Boeing employee, a mother and grandmother of 13, I find my time especially precious. Focusing on life balance is one of my priorities and I hope one of your priorities. We need to recognize that life is full of demands on our energy and time. We are responsible for the choices we make, choosing wisely – things that bring harmony into our daily lives and focusing on the things that are important to us. SWE is one of those things for me. I make a conscious choice to find time for SWE, because it is a beneficial choice that adds meaning and fulfillment to my life. My granddaughter is now considering a career in forensic investigation, due to her involvement with SWE, where two years ago she couldn't imagine herself capable of a career in science. SWE provides multiple avenues for learning, experiencing leadership positions in a non-threatening environment and building a network of support that will last a lifetime. It is our goal that SWE provide fulfillment and meaning for each member, so they can choose wisely. So, as you look at your plans for the year, remember:

You must choose how to use your energy and time wisely.

You have enough, because you have all there is.

Intentional choices are your responsibility.

Susan L. Floyd

Section Meeting

**Monday, September 23, 2002 at
Mangroves Restaurant-**

6615 N. Atlantic Ave. Cape Canaveral, FL

5:30 Social, 6:00 Dinner

Family Issues Panel

Our speakers will share how they deal with every day issues and still manage to hold on with a demanding job in an uncertain work place

Cost is \$22 for members and \$11 for Students

Email reservations to Connie McFadden
at mcfadcl@kscems.ksc.nasa.gov
no later than **Thurs., Sept 19**

Meal Choices:

Baked Flounder Almandine with Vegetables and Rice
White Chicken Parmesan with Fettuccine Marinara
Vegetable Fettuccine with Pine Nuts and Garlic Butter

All meals come with salad & bread, and coffee or tea.

Trays of appetizers will be set out during the social time.
There will be a cash bar for soft drinks and wine.

Send your check and meal choice to
SWE-SC at
P. O. Box 1297 Cape Canaveral, Florida 32920
**Payment from non-members is required by
Thursday, Sept. 19th.**

For more information call
Jamia Brogan @ 749-9928 (cell)

Note that all reservations not cancelled by three working days before the meeting must be paid for.

Professional Development Committee News--- From Jamia Q. Brogan

This year's Professional Development theme is "The Balanced Woman".

Monthly Section Meetings and special excursions will focus on balancing your work and home life, advancing your career and supporting efforts to protect the environment. We have many fun and exciting activities planned, including a family issues panel, leadership workshop, ecological tours of the enchanted forest and a pontoon boat tour on the Indian River.

Also New this year!!

- ✍* A contest will be held starting with our first meeting. The contest will request that each member bring a guest (potential member) with them to each dinner. If your guest becomes a member your name will be submitted for a final drawing to be held in May. The winner of the drawing will receive a gift certificate to a fine restaurant.
- ✍* Survey and suggestion for dinner meetings at each meeting. Survey results will be submitted each month.

Last years Family Issues Panel was a success, so we decided to bring it back again. Watch for the September Dinner meeting flyer with more information! We have new panel of members willing to tell you about how they deal with every day issues and still manage to hold on with a demanding job in an uncertain work place. Today's issues deal not only with the young ones needing attention but a lot of us are also dealing with the elderly and their special care.

Please join us for a fun filled evening and don't forget to bring a guest.

SWE Space Coast Section Officers and contacts for FY 2003

<p>President: Susan Floyd (Boeing) (W) 861-9066 susan.floyd@swe.org</p> <p>Vice President: Connie McFadden (Bionetics) (W) 476-4211 mcfadcl@kscems.ksc.nasa.gov</p> <p>Secretary: DeAnn Sperber (Harris) dsperber@harris.com, (W) 768-4846</p> <p>Treasurer: Kam Kersey (H) 783-4644 kam.kersey@swe.org</p> <p>Section Representative: Kathleen Harer (NASA, Retired) (H) 799-4379 kharer@myexcel.com</p> <hr/> <p>Career Guidance: Barbara Hoelscher (USA, retired) (H) 268-5888 Bhoelscher@aol.com</p>	<p>Publicity/Newsletter Editor: Linda Hait (Boeing) (W) 867-0854 mhait@cfl.rr.com</p> <p>Newsletter Editor: Karen Lineberger (USA) (W) 861-5486 (2nd shift)</p> <p>Professional Development: Jamia Brogan (Lockheed) (W) 861-9059 Jamia.Brogan-1@ksc.nasa.gov</p> <p>Membership: Judy Kersey (H) 783-4644 judy.kersey@swe.org</p> <p>CCTS Representative: Suzanne Calhoun (Nokia) Suzanne.Calhoun@nokia.com</p> <p>Scholarship: Donna Ware (LMTO) (W) 476-3757, x329 donna.ware@lmco.com</p>	<p>FIT Student Sect President Davlyn Chin dchin@fit.edu</p> <p>FL Tech Faculty Advisor Dr. Maria Pozo de Fernandez (W) 768-8000 X 8838 mpozo@fit.edu</p> <p>ERAU Student Section President Krista Johnson johnskri@db.erau.edu</p> <p>UCF Student Sect. President Ann Marie Uskert swe_annmarie_ucf@engineer.com</p> <p>UF Student Section President Freda Zifteh fritolay@ufl.edu</p>
--	---	--



From left to right:
Barbara Hoelscher,
Susan Floyd,
Linda Hait,
Judy Kersey,
Connie McFadden
DeAnn Sperber,
Kathleen Harer,
Kam Kersey
(Not shown, Jamia Brogan,
Professional Development).

Space Coast Section 2002 –2003 Events Calendar

This calendar portrays our current schedule of events. Please keep checking it monthly for possible changes. Check the website (www.spacecoast.net/spacecoast/swe) for latest details and updates.

Date	Event	Location (tent.)
Mon, Sept 23	Section Meeting – Family Issues Panel	Cape Canaveral
Oct 9-12	SWE National Conference	Detroit, MI
Sat, Oct 19	Executive Council Meeting	Suntree
Tues, Oct 29	Section Meeting	Titusville
Sat, Nov	Stained Glass Workshop	(Central)
Thurs, Nov 21	Section Meeting – with ASME or ASCE	PAFB NCO Club
Tues, Dec 17	Holiday Networking Social	Suntree CC
Sat, Jan 11	Executive Council Meeting	Merritt Island
Tues, Jan 14	Section Meeting – Leadership	Titusville
Sat, Jan 18	State LEGO League Competition	FIT, Melbourne
Sat, Jan 25	Introduce a Girl to Engineering Workshop	Merritt Island HS
January	Women Engineer of the Year Awards Judging	Various
Sat, Feb (several)	Science Fair Judging	Various
Sat, Feb 8	Section Meeting & Tour – Environmental	Brevard Zoo, Viera
February	Scholarship Judging	Titusville
Wed, Feb 19	Awards Banquet	Rockledge CC
Mar 20-22	FIRST Robotics Regional Competition	UCF, Orlando
Mar 14-16	SWE Region D Conference	Mayaguez, PR
Thur, Mar 27	Section Meeting – Women’s History Month	Central
Sat, Apr 12	Executive Council Meeting	Cocoa Beach
April 24-26	FIRST Robotics Competition	Epcot, Orlando
Apr	Section Meeting – Tour of Enchanted Forest	Titusville
May	Section Meeting – Technical	Melbourne
June	End of year party – Pontoon Boat and Eco Tour	Titusville

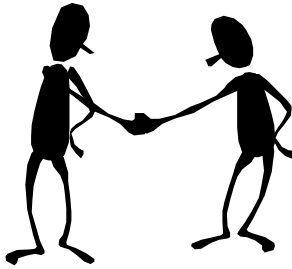
New Member Orientation Sessions

Another New Member Orientation Session has been planned for new members to provide them insight into the section’s programs and organization. The sessions are open to any SWE members or prospective SWE members who would like to learn more about what the section is doing. The first was on August 22. The next session is:

Monday, September 9, 7:30pm
 Susan Floyd’s house for Dessert & Coffee
 5165 S. Tropical Trail, Merritt Island

To meet everyone’s needs, the meetings are at different times and locations. If you are interested in attending one of these sessions contact Judy at 783-4644 or judy.kersey@swe.org. Suggestions for dates/times of future sessions are welcomed.

Welcome To Our New Members ---From Judy Kersey



Kim Miller, a Mechanical Engineer with a degree from the University of Colorado, is working with The Boeing Company. Kim transferred here from the Orange County (CA) Section.

Michele Labre has rejoined SWE. Michele is an engineer with Lockheed Martin and has an Aerospace degree from the University of Minnesota.

Melissa Meyer is an engineer with Northrop Grumman. She has a degree in Industrial Engineering from Georgia Tech. Melissa actually lives in Jupiter, but works in Melbourne and has elected to be part of our section.

Domenico Ruggiero, a recent Aerospace Engineering graduate of the University of Florida, is a structures engineer for USA. Domenico was honored with the Dean Weil Engineering Leadership Award from the University of Florida.

Yufen Chan is an engineer with Northrop Grumman has a degree from Florida Tech in Computer Science.

Marie Cobb is an electrical engineer with a master's degree from the University of Rhode Island, recently relocated here from Utah.

Janice Everett is a new student member, employed by NASA in the Environmental area. She is pursuing a degree at UCF.

Cara Hill is a new member working for JDS Uniphase. Cara has a degree from UCF.

Stephanie Stilson is a NASA Vehicle Manager responsible for Orbiter Discovery Processing operations. Stephanie has a BS Degree in Computer Engineering/Electrical Engineering from North Carolina State University.

Patricia (Trish) Langwost is a Systems Engineer with NASA working on the Space Station. Patricia has a BS degree in Electrical Engineering from the University of North Dakota.

Gloria Vigilante, an Avionics System Engineer with NASA working on Space Station, has a BS degree from UCF in Electrical Engineering and an MS degree in Computer Science from Florida Tech.

Melissa Prince, a student at Brevard Community College, plans to attend the University of South Florida after completion of BCC.

Membership Committee News---From Judy Kersey

Other Member News:

Connie McFadden, our section Vice President has been busy lately. She has changed jobs, taking a position with Bionetics as a Facility Manager. Connie also had the pleasure of being on hand for the birth of another grandchild – a baby girl.

So Long:

Not only have we had new members moving into the area, but we have had to say goodbye to several active members:

Kristen Kinder, our former Publicity Chair, Newsletter Editor and Webmaster, has relocated to Houston where she is still working for Boeing.

Kim Hoogenboom has gotten married and relocated to Ohio with her new husband.

Marjorie Fuller has been promoted to Lt. Col. in the Air Force and has relocated to Texas.

Susan Hutchison, a long time member has temporarily relocated to Houston as part of a NASA Career Development Program. We expect Susan to be back here next August.

If you have news you would like to share with others about yourself or another SWE member, send it to Judy Kersey.



SWE Dues Time Again!

Yes, it's time to pay your SWE dues *again*. For those of you who joined this spring, you may be asking "Already?" The SWE Fiscal Year runs from July 1 to June 30. Joining after January 1 was for a half year of membership. For anyone who has not gotten a dues bill this year or lost it or aren't sure if you paid, contact Judy Kersey, Membership Chair, for assistance. Reminder email notices were recently sent from SWE HQ. If you have changed your email within the past year, you may not have received the reminder.

Why Be a Member of SWE? (Or, What's in it for me?)

This is the next question you might ask when the dues bill comes. Each of us is at a different stage in our career, our family life and our personal life and may be seeking different things. So each of you may perceive the value of SWE differently.

If you are fairly new to the area or new to the engineering field, one of the things SWE may offer you is opportunities to meet other women engineers, including some who are managers or directors, either in your own company or other companies. These relationships can help you learn what it takes to get ahead in your career or may open doors in the future for that next job. This is of value also to those who have been around awhile, but are still looking for job advancement.

If you are further along in your career, you may have reached the point where you need to develop leadership skills. This is sometimes difficult to do on-the-job. SWE has opportunities to develop in a non-threatening environment by taking on a committee or subcommittee function.

Connie McFadden, section Vice President, reports that SWE has been an invaluable experience for her and has significantly aided in her career advancement. Not only does it provide the opportunity to work on leadership skills, it also is an opportunity to meet people from other areas. Linda Bradley recently attended a meeting of a national advisory board associated with a Girls Inc. NSF Grant. Linda's appointment to this board was the direct result of SWE activities and membership.

Perhaps you are more interested in "giving back" to the community for what you have been able to attain over the years though the help of other women and your family. SWE and Space Coast in particular, is very active in our education outreach program. We do this though the support of our members, both their time and their money. We have planned a workshop for 400 girls in January along with our normal scholarship program and judging science fairs. We also respond from time to time for requests for engineers to go into the classroom or meet with a girl scout troop as a role model. We are building up a set of materials to assist our members in doing this.

You have to remember that just paying your dues can't bring all the benefits of being a member. You have to get involved, come to meetings, meet other members, and volunteer to support one of the committees. **Be an active part of an organization that can do great things.**

If you don't find what you want from the organization, speak up, tell Susan what you think would make the organization more beneficial to you. We are planning to put out a survey in the next month to determine member interests to better align our programs to meet your interests and needs.

Happy New School Year from Career Guidance Teams!
Barbara Hoelscher, Career Guidance Chair

It is a pleasure to introduce the SWE-SC 2002-03 **Scholarship Chair: Donna Ware**, Electrical Engineer for Lockheed Martin Technical Operations (LMTO), Titusville, FL, supporting Lockheed Martin Astronautics Operations (LMAO) division at Cape Canaveral Air Station with Facility Electrical Systems. Please call or email Donna if you have scholarship questions, want to pitch into the Scholarship program. (476-3757, x329; donna.ware@lmco.com)

Pat Houston is heading up several school day, afternoon events (2:45 to 3:30) for **West Shore Junior / Senior High School, Melbourne**. She is looking for SWE and prospective SWE women to visit the classroom with a project or motivational discussion for the young women. If this is for you, call Pat at 861-4724 or 433-0369. Her email address is Patricia.Houston-1@ksc.nasa.gov.

Kara Floyd is chairing the ambitious **Introducing Girls to Engineering Workshop (IGEW)**. See the IGEW article in this newsletter. The levels of grades, intensities and opportunities have doubled!

Karen Lineberger will return to head up **Science Fair Judging** this year. Last year was very successful and we developed several good school relationships for this program. We need volunteers to be Judges for Science Fairs on Saturday mornings in January and February: Indian River, Brevard and Volusia counties.

SWE-SC was represented at the 4th Annual SCSEA (Space Coast Science and Engineering Alliance) Exemplary Teacher Awards Dinner, held at the Florida Solar Energy Center on August 6th. Our Section and Career Guidance presented Office Depot gift certificates and cartons of printer/copy paper to the eight winning teachers.

The Exemplary Teachers are: Maggie Molledo, DeLaura Middle, Lynne Gelinas, Westside Elementary, Diane Shoeman, Merritt Island High, Elizabeth Youngs, DeLaura Middle, Dawn Arnett, Titusville High, Linda Copeland, Fairglen Elementary, Kathy Crisafulli, Audubon Elementary, Beth Davis, Golfview Elementary.

An Invitational **FIRST Robotics Competition** will be held on October 18th at a high school in Kissimmee. FIRST Robotics will transfer locations and support systems from KSC / NASA to UCF / UCF-NASA in the Spring of 2003. More information to follow as it develops.

SWE-SC will be working with SECME (Science, Engineering, Computers and Math Enrichment) this year. The First Annual SECME Conference will take place at the Board Room of the Brevard School Board, Viera, on September 9th from 8:00 to 11:00. Brenda Simmons, National SECME will be the Keynote Speaker. Mr. David Merker will also speak. If you can join in, please come! Please RSVP to me at barbara.hoelscher@swe.org or 321-268-5888.

GIRLS, INC Operation SMART 2002 Annual National Advisory Committee Meeting

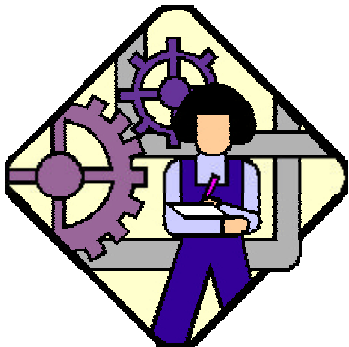
As a result of contacts during a 2000 SWE seminar at Port Canaveral, Linda Bradley (SWE Space Coast Career Guidance Committee Member) was invited to become a member of the National Advisory Board of GIRLS, INC Operation SMART/Thinking SMART. Linda and Barbara Hoelscher attended the Annual National Advisory Board meeting at New York corporate headquarters, on August 23-25, 2002. Gail Mattson, Past SWE National President, is also a Committee Member on this Board and attended this meeting.

Operation SMART was developed to create an interest and encourage girls in science, math, technology, and engineering fields. The goal is to formulate a plan for a new component of Operation SMART.....Thinking SMART- a new program to develop curriculum and training for facilitators at the four pilot sites of GIRLS, Inc.

Throughout the year we'll have several opportunities to help teachers and students in the classrooms, Girl Scouts, and E-Week, a couple workshops and pitch into requests yet to be received.

Please call me if you have ideas, requests, information, and etcetera. I look forward to hearing from you. Barbara Hoelscher, CGC 321-268-5888; barbara.hoelscher@swe.org.

Introducing Girls to Engineering Workshop



We have scheduled an Introducing Girls to Engineering Workshop (IGEW) for Saturday, January 25 at Merritt Island High School. **Kara Floyd** will chair the event.

We had such a rousing success last year, we have "raised the bar" this year and are planning to accommodate up to 400 girls in 3rd to 9th grade and up to 200 parents in the Parents' Program. To accomplish this, we need your help. We have received a grant from SWE, funded by the ExxonMobil Education Foundation to assist us with this project and are also seeking additional funding locally.

Your Help is Needed!

Judy Kersey is coordinating the hands-on workshop modules and has lots of ideas and material, but needs engineers who will take the lead in conducting the module. This is your opportunity to directly affect the lives of young women by making them aware that engineering is a fun, exciting career that is open to women. Each module will last about 45 minutes and will have 20-25 girls in it. You won't be doing this alone though, since we plan to have at least 3 helpers in each classroom.

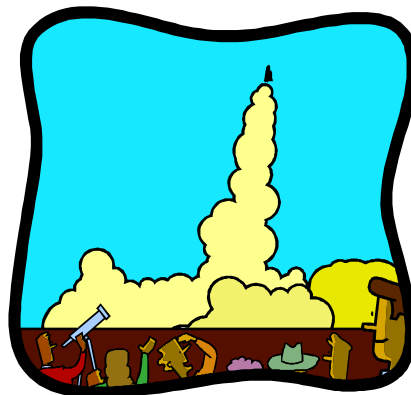
To accommodate 400 girls, we need at least 20 different workshop modules going in parallel. If you (or a friend) have any ideas for modules or would like to take on one that has already been developed, contact Judy at judy.kersey@swe.org.

Linda Bradley is coordinating the Parents' Program and has lined up Ron Caswell as our keynote speaker. Ron Caswell works for Lockheed Martin Space Operations, ISS Launch Site Integration Office at Kennedy Space Center. Ron has a passion for the Space Program as seen in the newsletter he authors, "Eyes on the Cape". Ron has traveled all over the world to pursue his education and love for the Space Program, visiting Russia, South America and Germany and visiting all the launch sites. Ron has been the keynote speaker at many events, including Space Congress, CCTS Engineering Week Dinner, Teachers Conference in Washington DC, NAWIC, and USA NMA.

SWE is honored to have the opportunity to have such an inspiring speaker participate in IGEW.....don't miss this "Out of this World " experience. Eyes on the Cape link: <http://www.eyesonthecape.com/>

If you have any suggestions for topics we should cover in our Parents' Program, contact Linda at bradleysight@aol.com.

If you would like to volunteer to assist with this outstanding program in some other way, contact Kara Floyd at karafloyd@cfl.rr.com. With a project of this magnitude, there are ample opportunities for everyone to be involved at whatever level they are interested in.



Section Finance News:



The section finished FY 02 with a sound financial position. We were able to return the Girls Science Club Grant balance and cover \$3000 in scholarship receivables without dipping into our investment funds.

The Professional Development Seminar and our CCTS award provided a much needed income boost. As you might imagine, the investment program took a hit this year. The money market fund made a few dollars but the growth fund lost about \$1800. We still have a healthy investment program, however.

Breaking good news! The SWE Program Development Grants Committee has approved our proposal for support to IGEW!!!!

The Executive Council met on July 24th and reviewed the draft budget for FY 03. The budget provides for another robust year. The Executive council will consider the final budget proposal in a few weeks.

Section Financial Procedures

As we begin a new SWE year, I want to remind everyone about our procedures for receiving payment:

?? Committee chairs or individuals requesting payment for SWE expenses must complete a SWE Space Coast voucher and obtain committee chair and officer approvals as required. The voucher should then be submitted to the Treasurer for payment. A copy of the voucher is in the "Red Book" each officer has and can also be obtained from the Treasurer.

?? The program or activity for which reimbursement is being requested must have an Executive Council approved budget line item.

?? Changes in the overall budget for a committee or event that exceed 10% of their approved budget must be brought to the Executive Council for approval before the funds are committed/spent.

If you have any questions or need a voucher, call Kam at 783-4644.

SWE 2003 National Conference "The Art Of Engineering"



Sally Ride, the first American women in space, is the Keynote Speaker for the Conference Opening Event Detroit Michigan on October 9-12, 2002. Sally Ride is easily one of the most recognized women in the science and engineering fields. As the first women in space, she was instantly placed in the public spotlight and became a role model for many young women and girls.

Check out the website and make your plans to attend. At least 6 members of Space Coast section are planning to go and cheer on the Boeing Team Tech competition. <http://www.swe.org/SWE/Convention/detroit/index.shtml>

Mark your calendars now for the Holiday Social on December 17 at the Suntree Country Club.



Society of Women Engineers

Space Coast Section

P. O. Box 1297

Cape Canaveral, FL 32920